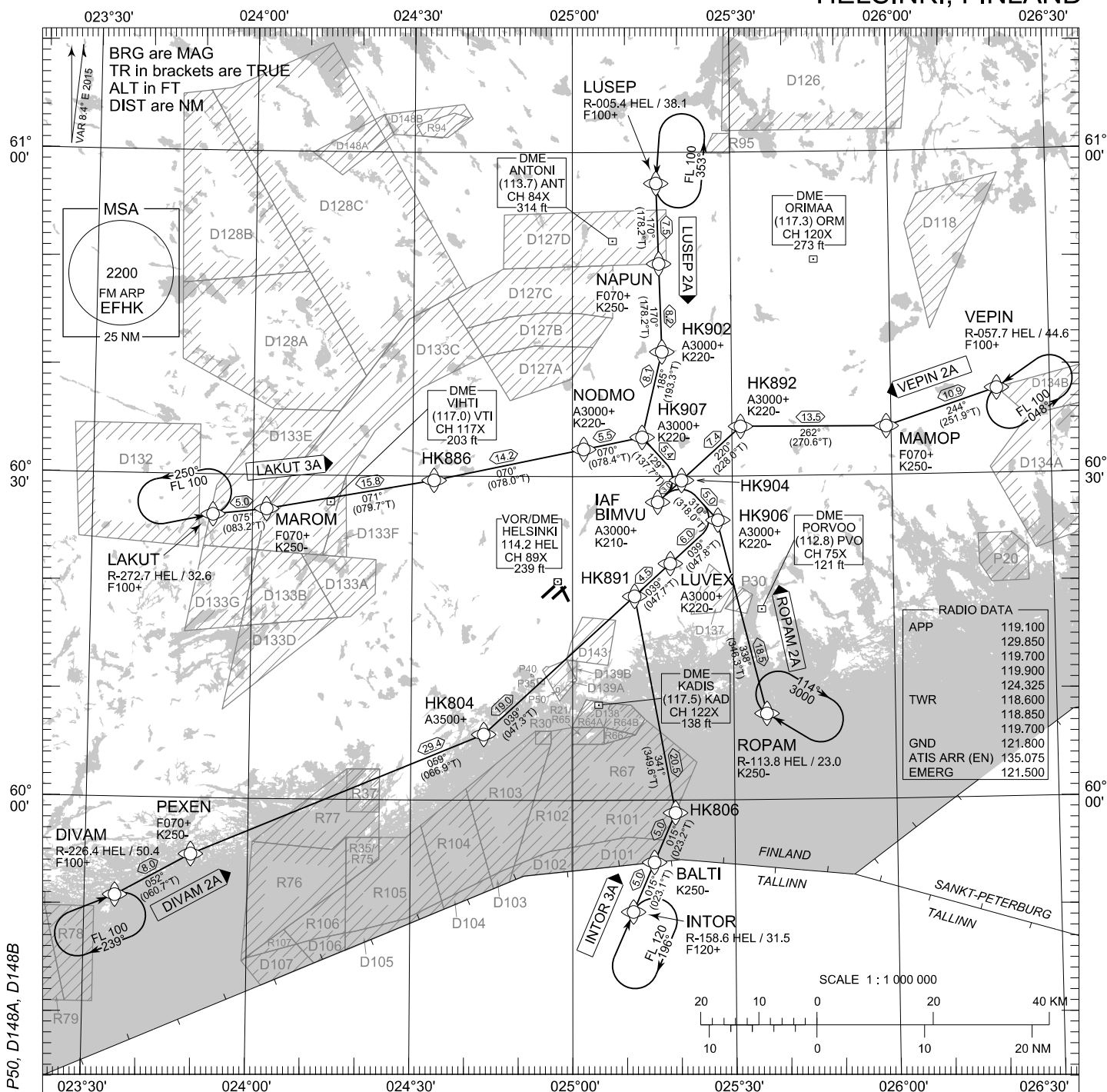


TRANSITION ALT
5000

CHG: all RTE, ADDN P35, P40, P50, D148A, D148B



DIVAM 2A INTOR 3A LAKUT 3A LUSEP 2A ROPAM 2A VEPIN 2A

RCF: SELECT TRANSPONDER CODE 7600.

RNAV STAR HAS BEEN GIVEN AND ACKNOWLEDGED:
FOLLOW THE STAR TO THE RESPECTIVE RWY AND
EXECUTE IAP AND LAND.

DURING RADAR VECTORING BEFORE IAF:
PROCEED TO ROPAM HLDG USING LAST ASSIGNED
AND ACKNOWLEDGED ALT/FL OR MHA IF HIGHER.
LEAVE HLDG ACCORDING TO CURRENT FLIGHT PLAN
ETA, USE RNAV STAR TO JOIN IAP AND EXECUTE IAP
FOR LAST ACKNOWLEDGED RWY.

AIRCRAFT HAVING TELEPHONE, CALL +358 9 8277 3324.

STAR MUST BE FLOWN ACCORDING TO THE DEFINED
WAYPOINT SEQUENCE UNTIL THE LAST WAYPOINT.
SEPARATE CLEARANCE TO INBOUND IS NOT REQUIRED

ATC WILL GIVE DESCENT CLEARANCES.

ALT / FL / SPEED CONSTRAINTS MUST ALWAYS BE FOLLOWED AS PUBLISHED UNLESS EXPLICITLY CANCELLED BY ATC.

BY ATC CLR IF TFC PERMITS. PLAN CD PATH ACCORDING TO STAR.

EFHK RNAV STAR RWY 22L										
RTE NAV SPEC	SEQ NR	P/T	WPT		MAG	GEO TR	DIST NM	Turn Direction	Constraints	
			ID	Flyover					LVL	Speed
DIVAM 2A RNAV 1 or P-RNAV	010	IF	DIVAM	-	-	-	-		F100+	
	020	TF	PEXEN	-	052°	060.7°T	8.0		F070+	K250-
	030	TF	HK804	-	059°	066.9°T	29.4		A3500+	
	040	TF	HK891	-	039°	047.3°T	19.0			
	050	TF	LUVEX	-	039°	047.7°T	4.5		A3000+	K220-
	060	TF	HK906	-	039°	047.8°T	6.0	L	A3000+	K220-
	070	TF	HK904	-	310°	318.0°T	5.0	L		
	080	TF	BIMVU	-	219°	227.9°T	3.0		A3000+	K210-

INTOR 3A RNAV 1 or P-RNAV	010	IF	INTOR	-	-	-	-		F120+	
	020	TF	BALTI	-	015°	023.1°T	5.0			K250-
	030	TF	HK806	-	015°	023.2°T	5.0	L		
	040	TF	HK891	-	341°	349.6°T	20.5	R		
	050	TF	LUVEX	-	039°	047.7°T	4.5		A3000+	K220-
	060	TF	HK906	-	039°	047.8°T	6.0	L	A3000+	K220-
	070	TF	HK904	-	310°	318.0°T	5.0	L		
	080	TF	BIMVU	-	219°	227.9°T	3.0		A3000+	K210-

LAKUT 3A RNAV 1 or P-RNAV	010	IF	LAKUT	-	-	-	-		F100+	
	020	TF	MAROM	-	075°	083.2°T	5.0		F070+	K250-
	030	TF	HK886	-	071°	079.7°T	15.8			
	040	TF	NODMO	-	070°	078.0°T	14.2		A3000+	K220-
	050	TF	HK907	-	070°	078.4°T	5.5	R	A3000+	K220-
	060	TF	HK904	-	129°	137.7°T	5.4	R		
	070	TF	BIMVU	-	219°	227.9°T	3.0		A3000+	K210-

LUSEP 2A RNAV 1 or P-RNAV	010	IF	LUSEP	-	-	-	-		F100+	
	020	TF	NAPUN	-	170°	178.2°T	7.5		F070+	K250-
	030	TF	HK902	-	170°	178.2°T	8.2		A3000+	K220-
	040	TF	HK907	-	185°	193.3°T	8.1	L	A3000+	K220-
	050	TF	HK904	-	129°	137.7°T	5.4	R		
	060	TF	BIMVU	-	219°	227.9°T	3.0		A3000+	K210-

ROPAM 2A RNAV 1 or P-RNAV	010	IF	ROPAM	-	-	-	-			K250-
	020	TF	HK906	-	338°	346.3°T	18.5	L	A3000+	K220-
	030	TF	HK904	-	310°	318.0°T	5.0	L		
	040	TF	BIMVU	-	219°	227.9°T	3.0		A3000+	K210-

VEPIN 2A RNAV 1 or P-RNAV	010	IF	VEPIN	-	-	-	-		F100+	
	020	TF	MAMOP	-	244°	251.9°T	10.9		F070+	K250-
	030	TF	HK892	-	262°	270.6°T	13.5	L	A3000+	K220-
	040	TF	HK904	-	220°	228.0°T	7.4			
	050	TF	BIMVU	-	219°	227.9°T	3.0		A3000+	K210-

RNAV Holdings							
ID	INBD TR	INBD MAG	Turn Direction	MAX IAS	MNM HLDG LVL	TIME	DIST NM
DIVAM	067.4°T	059°	Right	230 KT	F100	1 MIN	-
INTOR	023.5°T	016°	Right	230 KT	F120	1 MIN	-
LAKUT	077.9°T	070°	Left	230 KT	F100	1 MIN	-
LUSEP	181.3°T	173°	Left	230 KT	F100	1 MIN	-
ROPAM	302.0°T	294°	Right	230 KT	A3000	1 MIN	-
VEPIN	236.1°T	228°	Left	230 KT	F100	1 MIN	-

WPT COORD
SEE PAGE EFHK AD 2.15 - 1